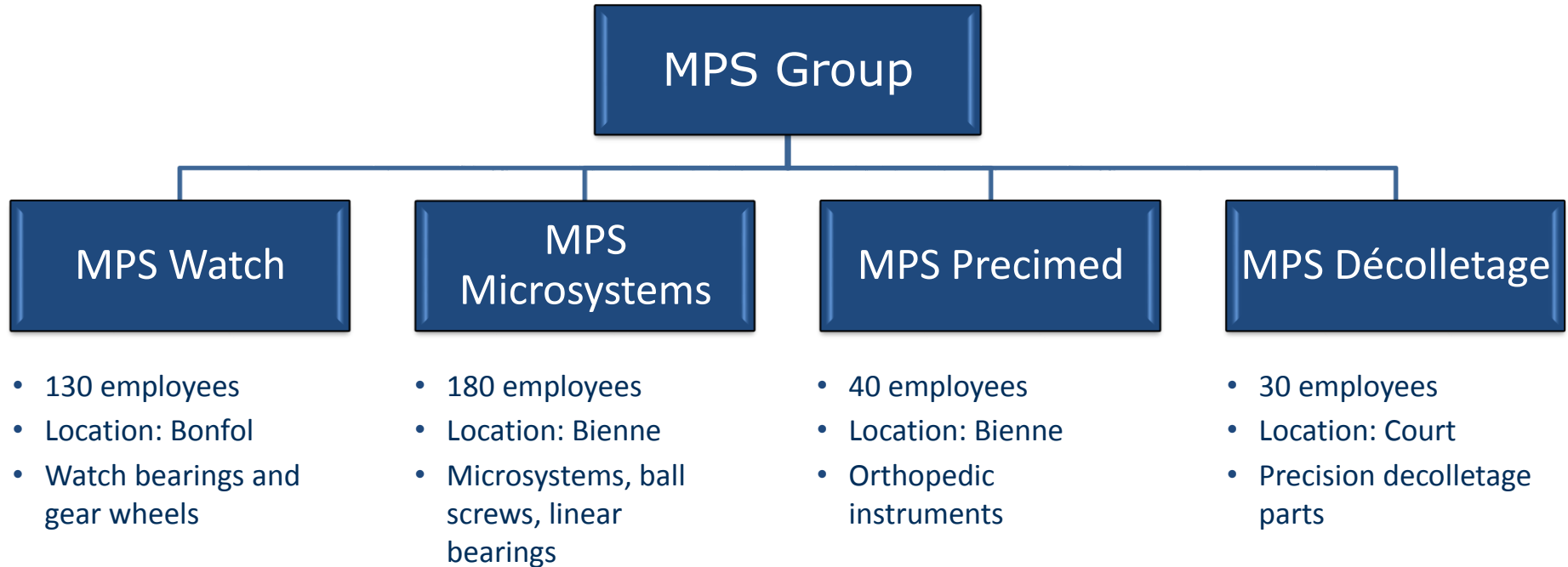


MPS Presentation

Bienne, June 28th 2018

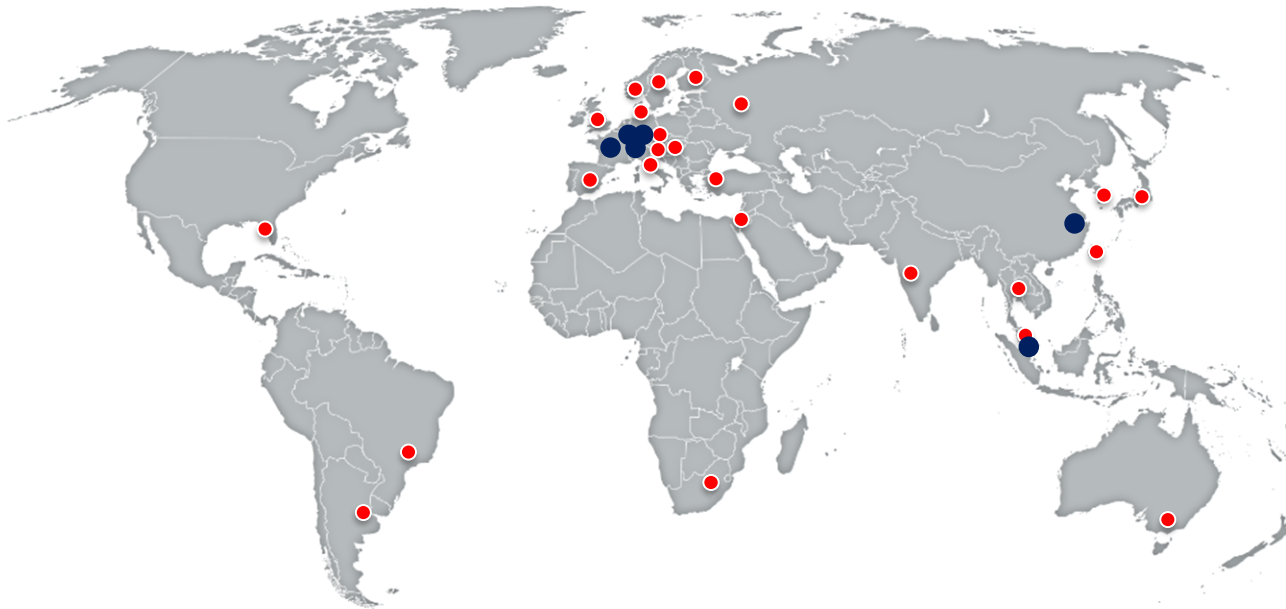
A young company with a long experience





MPS as part of the FAULHABER GROUP

- Headquartered in Schönaich, Germany
- International R&D and Production Locations:
 - ▶ 4 R&D Centers
 - ▶ 5 Production Centers
- International Sales & Service Locations:
 - ▶ 7 Sales & Service Locations
 - ▶ 24 Sales and Distribution Partners
- 17 Subsidiaries and Partnerships
- 1,600 Employees
- US\$ 240 Mio Revenue





Located in Biel/Bienne, Switzerland

14'400 m2 built in 2008

180 employees

ISO 9001 – ISO 14001 - ISO 13485

- Research & Development
- Industrialization
- Parts manufacturing :
 - turning, milling, EDM, grinding,
 - miniature balls manufacturing,
 - thermal and surface treatment.
- Microsystems assembly (clean room)
- Purchasing and logistic
- Quality assurance and Quality control



Medical



Optics & Photonics



Automation



Defense & Aerospace













Measuring instruments



Science



Components (Microlinea)	Engineered solutions (examples)
<ul style="list-style-type: none">• Ball screws 	<ul style="list-style-type: none">• Active implants  
<ul style="list-style-type: none">• Linear bearings (L-Line) 	<ul style="list-style-type: none">• Medical robotics 
<ul style="list-style-type: none">• Linear bearings (DBL lines) 	<ul style="list-style-type: none">• Pick & place Head 
	<ul style="list-style-type: none">• Focus mechanism 
	<ul style="list-style-type: none">• Tactile probe 
	<ul style="list-style-type: none">• Fin actuator 



RESEARCH & DEVELOPMENT

- 6 development engineers + 2 lab engineers
- CAD “Solidworks”
- FEM simulations
- PDM “Teamcenter”

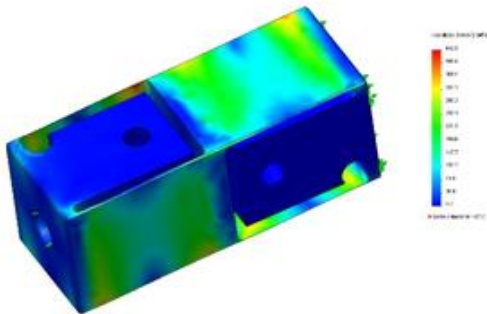
PROTOTYPING

- Turning: \varnothing 0.5 -300mm
- Milling: 4 axis CNC
- Flat grinding
- EDM / Wire EDM

TESTING

- Torque testing: $1\mu\text{Nm}$ – Nm
- Axial Force: < 2500N
- Noise measurement
- Lifetime test
- Development of test device for production

FEM simulation results showing stress distribution on a mechanical part.



Components manufacturing for high requirements



TURNING, MILLING & EDM

- Rod size from $\varnothing 2$ to $\varnothing 42$ mm $\pm 3\mu$

GRINDING

- Inner- / Outer grinding $\pm 0.5\mu$
- Thread and form grinding
- Centerless grinding
- Lapping/Polishing < 10 nm (roughness)

BALLS MANUFACTURING

- $\varnothing 0.130 - 1.588$ mm (ISO Grade 3)
- Sphericity $0.08\mu\text{m}$ - Surface roughness max $0.01\mu\text{m}$
- Stainless steel and Zirconium oxide

PARTS CLEANING & HEAT TREATMENT

- Tumbling and cleaning
- Quenching/ Precipitation hardening, Cryogenics, Tempering
- Deburring



Turning capabilities



TORNOS Deco and EvoDeco 10, 13, 16

- Rod size from \varnothing 2 to \varnothing 16 mm $\pm 3\mu\text{m}$
- 45'000 h/yr

SCHAUBLIN 220 CNC and 110 CNC

- Rod size from \varnothing 2 to \varnothing 32 mm $\pm 5\mu\text{m}$
- 10'000 h/yr



INDEX C100

- Rod size from \varnothing 2 to \varnothing 42 mm $\pm 5\mu\text{m}$
- 3'200 h/yr

MAZAK Integrex 200 IV S

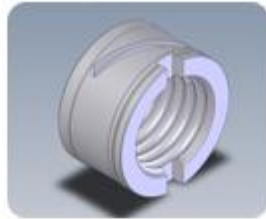
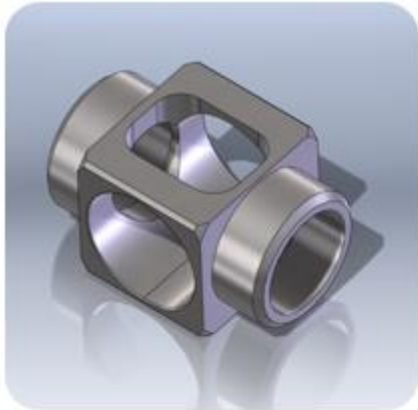
- Rod size from \varnothing 2 to \varnothing 65 mm $\pm 5\mu\text{m}$
- 1'600 h/yr



NEW EQUIPMENTS COMING SOON...

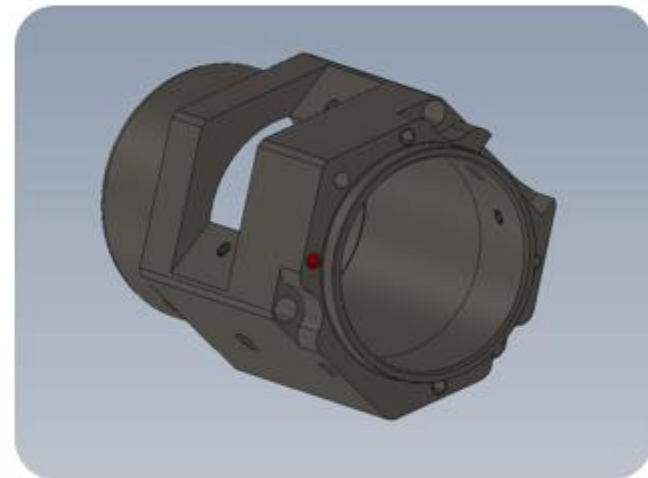
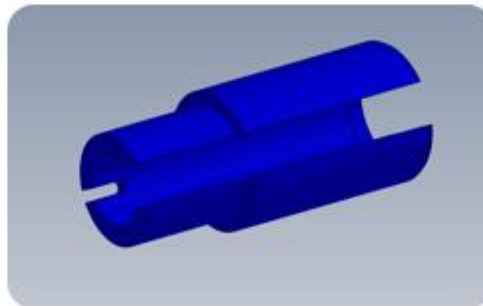
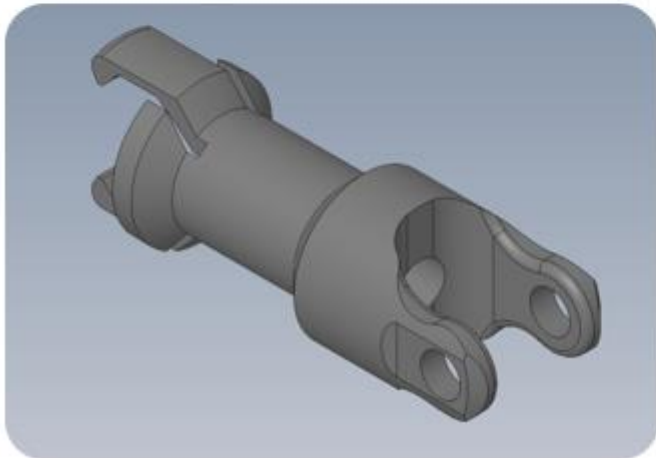
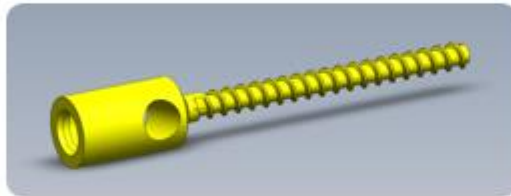
Accuracies depending on material

Turning capabilities



MATERIALS

- Steel
- Titanium
- Brass
- Bronze
- Aluminium
- Polymer



Microsystems assembly dedicated to precision



ASSEMBLY AREA

- Dust free area (1000m²)
- Clean room class ISO 7 (200m²)
- Product dedicated assembly lines

TECHNOLOGIES

- Cleaning
- Pairing in ¼ micron
- Riveting
- Press fit
- Gluing (UV, anaerobic)
- Precision Lubrication
- Laser welding
- Balancing
- Specific measurement
- Visual inspection
- Assembly under laminar flow boxes – ISO 6



A team of quality experts to support the organisation



EQUIPMENT

- Circularity measurement Talyrond
- Surface measurement Talysurf
- 3D touch & vision measurement Werth 3D
- Scan profile of components after turning Hommel
- Profile measurement Optacom Contour
- Project specific measuring and testing equipment



ENVIRONMENT

- Air-conditioned environment, temperature & humidity controlled

EMPLOYEES

- 15 employees (QM-Management, Metrology, Q-Planning, Incoming inspection, Production control, Supplier quality)

THANK YOU